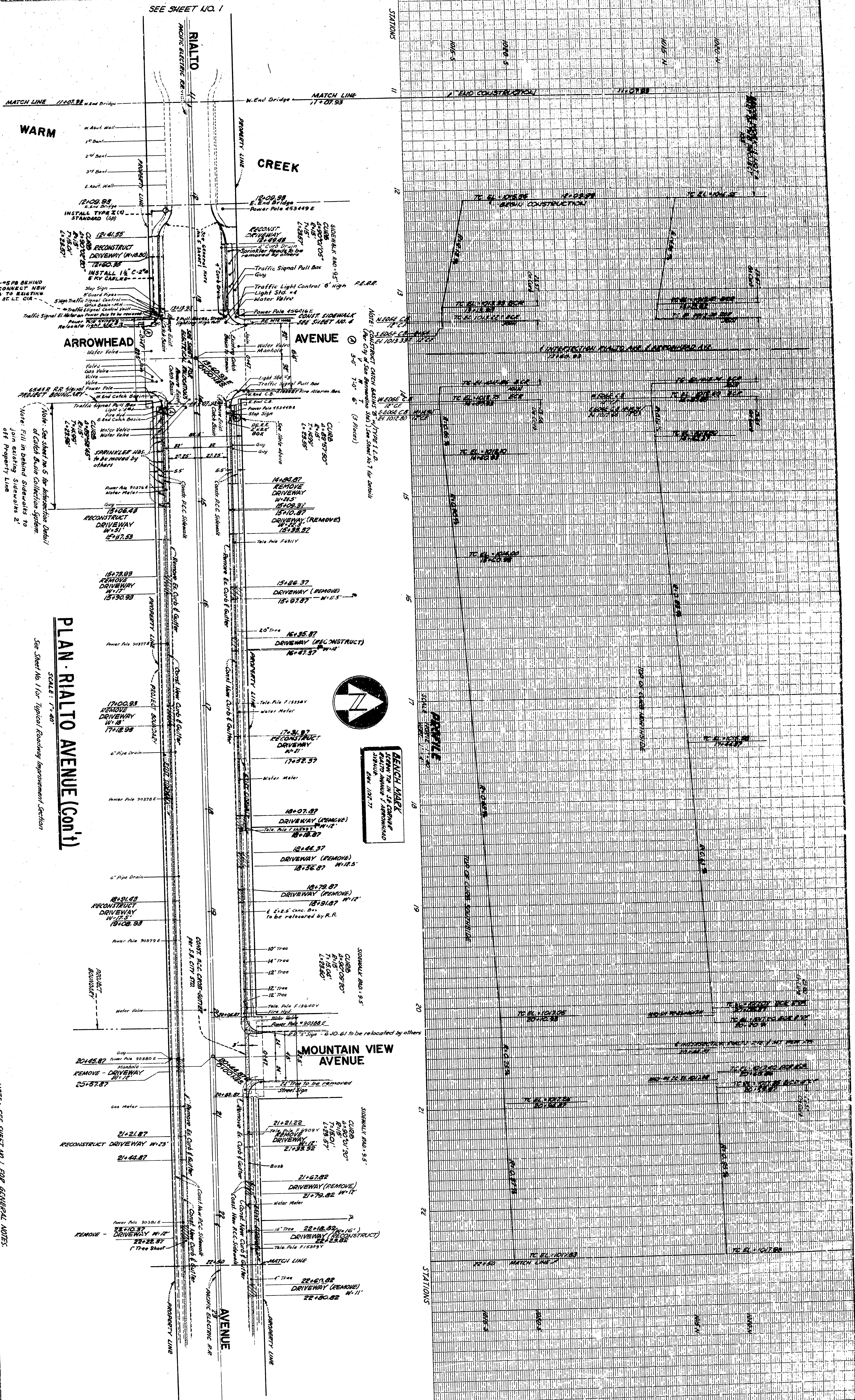


SEE SHEET NO. 1



WARM

CREEK

ARROWHEAD AVENUE

AVENUE

MOUNTAIN VIEW AVENUE

AVENUE

PLAN - RIALTO AVENUE (Cont'd)

SCALE: 1" = 40'

See Sheet No. 1 for Typical Roadway Improvement Section



GENERAL NOTES

1. FROM THE N.E. CORNER OF THE INTERSECTION OF RIALTO AVENUE AND ARROWHEAD AVENUE TO THE N.E. CORNER OF THE INTERSECTION OF RIALTO AVENUE AND MOUNTAIN VIEW AVENUE.

2. SEE SHEET NO. 1 FOR TYPICAL ROADWAY IMPROVEMENT SECTION.

NOTE: SEE SHEET NO. 1 FOR GENERAL NOTES.

DEPARTMENT OF ENGINEERING
CITY OF SAN BERNARDINO

MEADOWBROOK PROJECT AREA NO. 1
CALIF. R.I.O.

RIALTO AVENUE - (Cont'd) WARM
CREEK CHANNEL TO STA. 22+50

NO. DATE	REVISIONS	BY
1	9/23-83 UPDATE PLANS SUB. SIERRA W. FOR STODDARD DCH	DCH

ACCEPTED BY	REGISTERED CIVIL ENGINEER NO. 222
REGISTERED CIVIL ENGINEER	NO. 222

QUANTITY BY	REGISTERED CIVIL ENGINEER NO. 222
REGISTERED CIVIL ENGINEER	NO. 222

APPROVED BY	REGISTERED CIVIL ENGINEER NO. 222
REGISTERED CIVIL ENGINEER	NO. 222

REFERENCE	DATE
CHANN BY 8/7/84	8/7/84
2872	8/7/84

SEE SHEET NO. 3